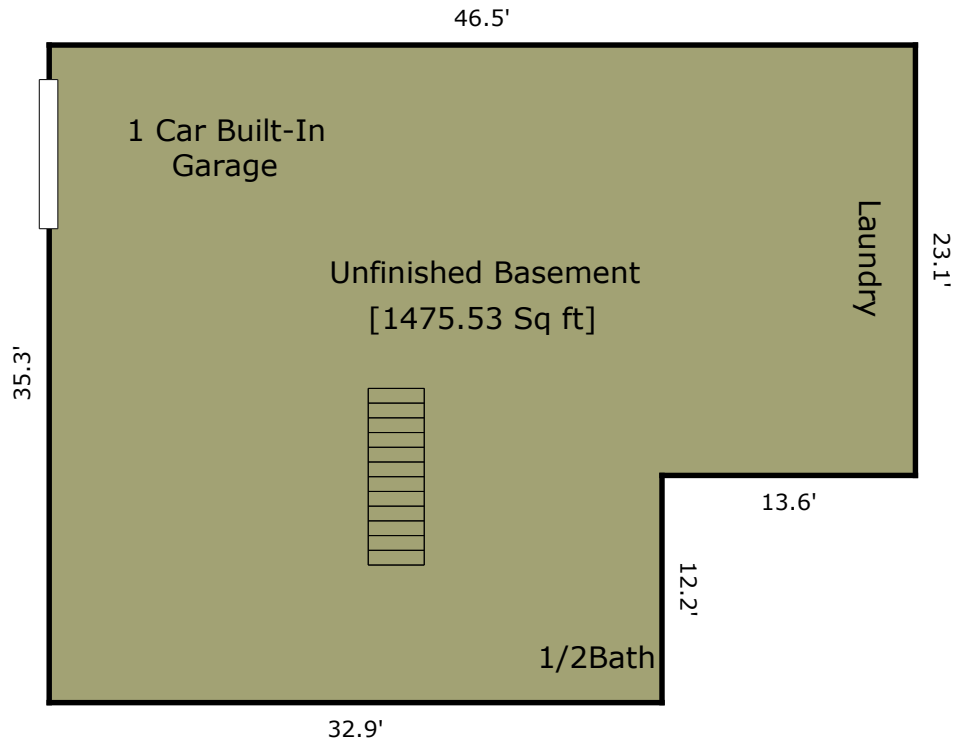


TOTAL Sketch by a la mode

Area Calculations Summary

Living Area		Calculation Details
First Floor	1475.53 Sq ft	$35.3 \times 32.9 = 1161.37$ $23.1 \times 13.6 = 314.16$
Total Living Area (Rounded):		1476 Sq ft
Non-living Area		
Screened Porch	163.59 Sq ft	$13.3 \times 12.3 = 163.59$
Wood Deck	230.4 Sq ft	$19.2 \times 12 = 230.4$
Porch	24 Sq ft	$6 \times 4 = 24$



TOTAL Sketch by a la mode

Area Calculations Summary

Non-living Area

Basement	1475.53 Sq ft	$35.3 \times 32.9 = 1161.37$
		$23.1 \times 13.6 = 314.16$