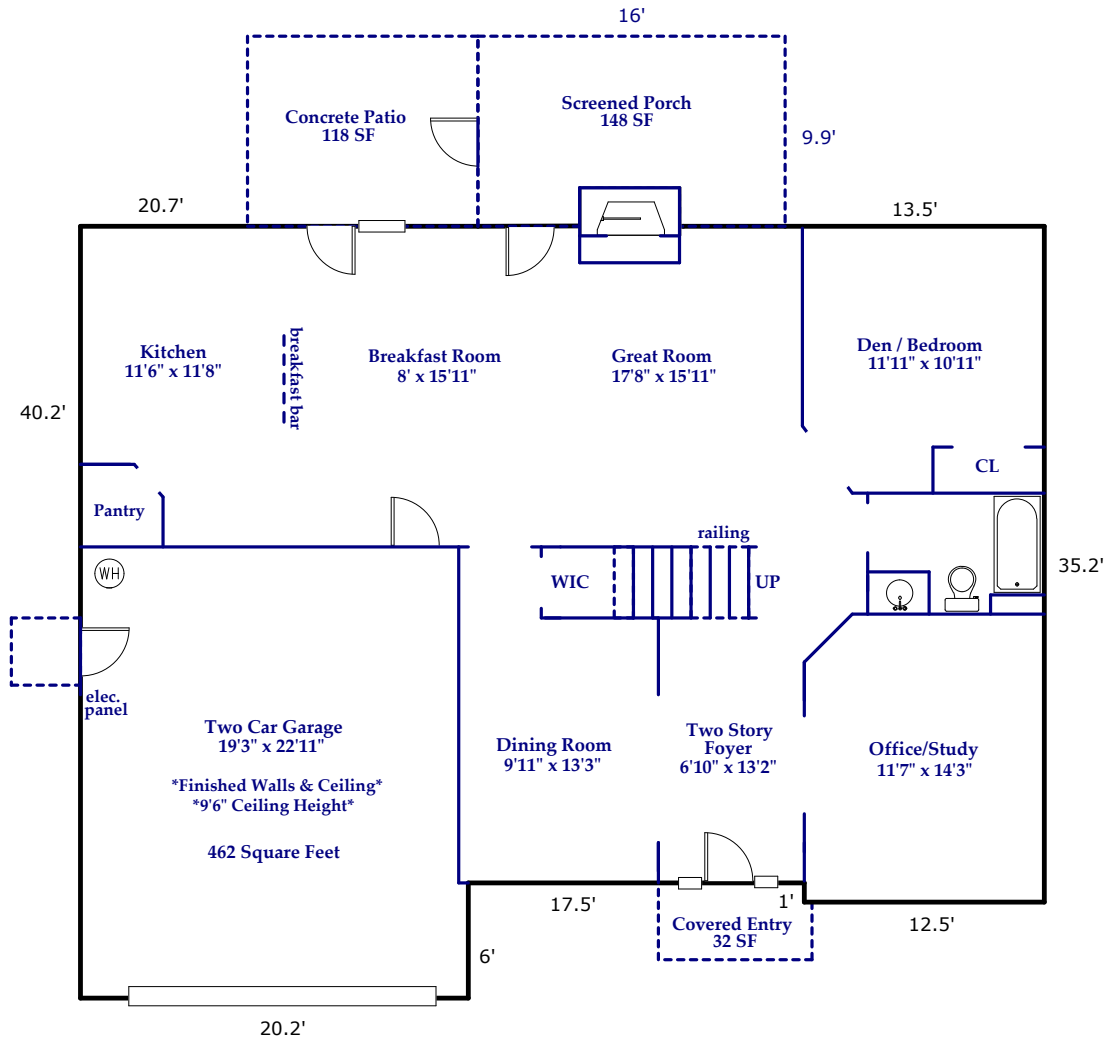


42 Stone River Drive, Asheville

Approximate Total Finished/Heated Living Area:
3010 Square Feet

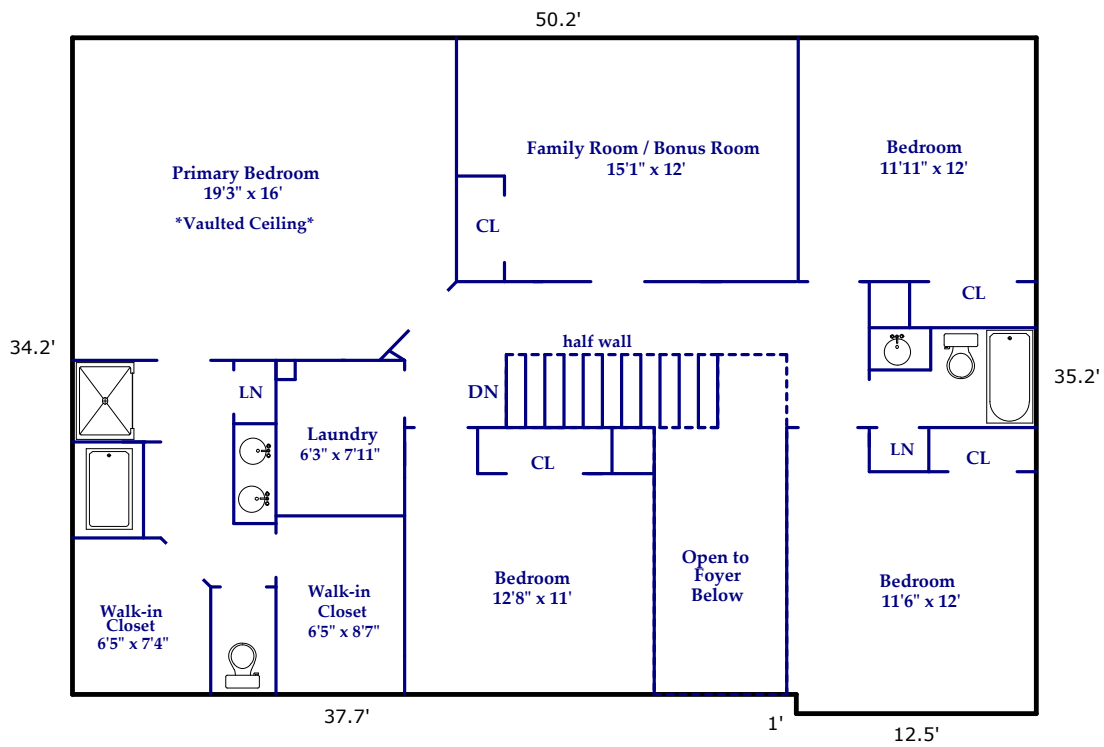
First Floor: 1388 Square Feet
Second Floor: 1622 Square Feet



FIRST FLOOR
1388 Square Feet
9' Ceiling Height

Prepared by Judy Brouillette-O'Neil: ProPlans of the Carolinas, LLC ©
for Nest Realty

All dimensions are rounded to the nearest .01 and are deemed reliable, but not guaranteed.
Square Footage Calculations determined following ANSI Standards and NCREC House Measuring Square Footage Guidelines.



SECOND FLOOR
1622 Square Feet

Total Square Footage Under Roof for All Finished/Unfinished & Heated/Unheated Areas:
3620 Square Feet
Includes Screened Porch