

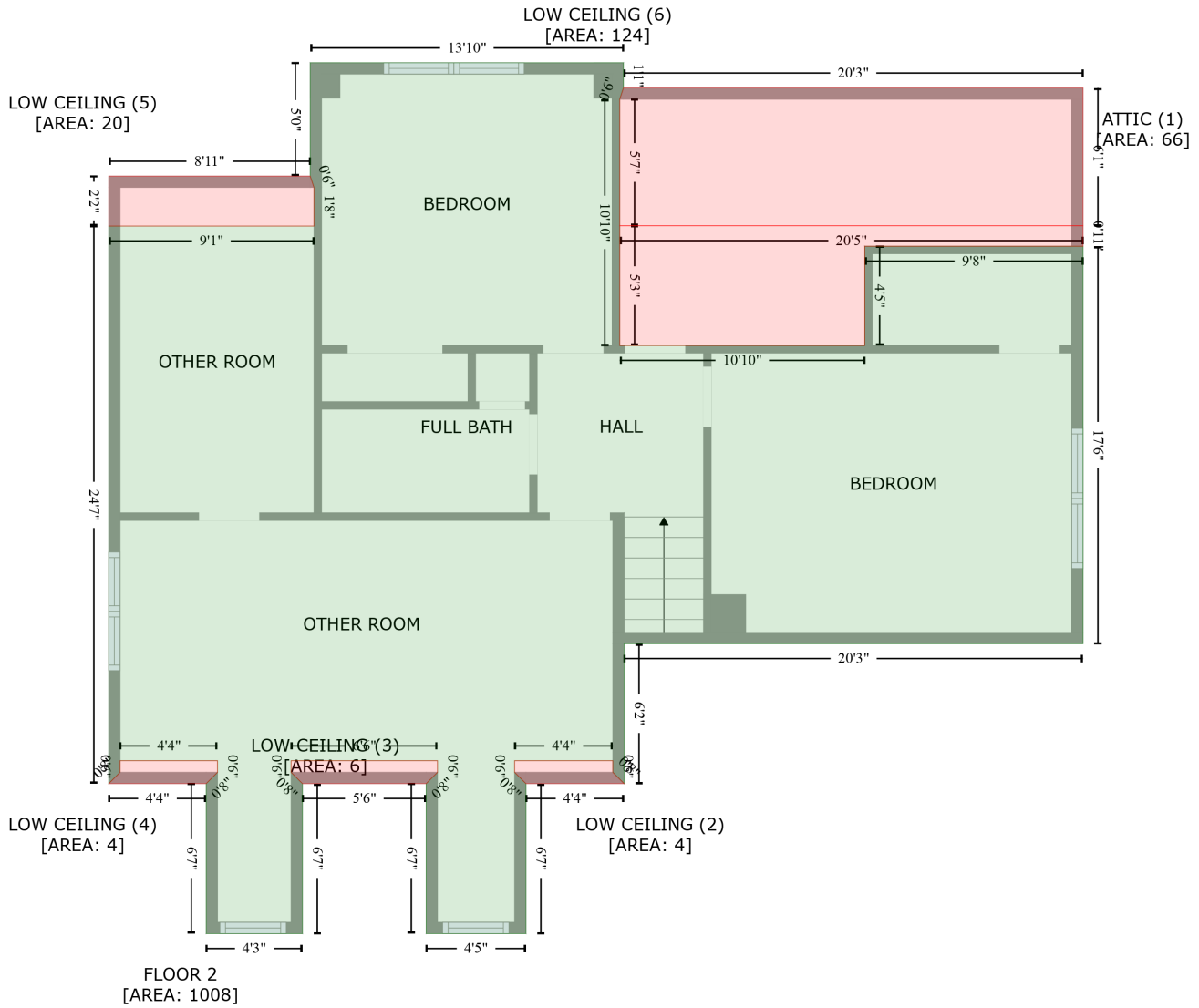
6212 Ambleside Drive, Myrtle Grove, Wilmington, New Hanover County, North Carolina, United States, 28409

Gross Living Area: 2312 sq. ft

Space	Area (sq. ft)	Calculation <small>Coordinate Polygon Area Algorithm using inches</small>
GARAGE (Non-living area)	466	$(209.2 - 185.6) + (367 + 453.4) * (185.6 - 185.6) * 0.5 * 0.00694$ $-((487.9 + 487.9) * (418.8 - 670.4) + (487.9 + 221) * (670.4 - 670.4) + (221 + 221) * (670.4 - 418.8) + (221 + 487.9) * (418.8 - 418.8)) * 0.5 * 0.00694$
DECK (Non-living area)	531	$-((419.7 + 419.7) * (-53 - 35.7) + (419.7 + 718.7) * (35.7 - 35.7) + (718.7 + 718.7) * (35.7 - 222.5) + (718.7 + 493.5) * (222.5 - 222.5) + (493.5 + 493.5) * (222.5 - 209.2) + (493.5 + 477.2) * (209.2 - 209.2) + (477.2 + 453.4) * (209.2 - 185.6) + (453.4 + 367) * (185.6 - 185.6) + (367 + 343.4) * (185.6 - 209.2) + (343.4 + 327.7) * (209.2 - 209.2) + (327.7 + 327.7) * (209.2 - -53) + (327.7 + 419.7) * (-53 - -53)) * 0.5 * 0.00694$
PORCH (Non-living area)	269	$-((808.4 + 808.4) * (481.9 - 632.3) + (808.4 + 804.4) * (632.3 - 632.3) + (804.4 + 804.4) * (632.3 - 790.3) + (804.4 + 590.4) * (790.3 - 790.3) + (590.4 + 590.4) * (790.3 - 794.3) + (590.4 + 491.9) * (794.3 - 794.3) + (491.9 + 491.9) * (794.3 - 713.3) + (491.9 + 736.9) * (713.3 - 713.3) + (736.9 + 736.9) * (713.3 - 516.8) + (736.9 + 773.4) * (516.8 - 516.8) + (773.4 + 808.4) * (516.8 - 481.9)) * 0.5 * 0.00694$

6212 Ambleside Drive, Myrtle Grove, Wilmington, New Hanover County, North Carolina, United States, 28409

Gross Living Area: 2312 sq. ft



Space	Area (sq. ft)	Calculation <small>Coordinate Polygon Area Algorithm using inches</small>
FLOOR 2 (Living area)	1008	$ \begin{aligned} & -((486.6 + 486.6) * (207.7 - 221) + (486.6 + 484.6) * (221 - 227) + (484.6 + 484.6) * (227 - 357.4) \\ & + (484.6 + 614.4) * (357.4 - 357.4) + (614.4 + 614.4) * (357.4 - 304.8) + (614.4 + 730) * (304.8 - \\ & 304.8) + (730 + 730) * (304.8 - 515.3) + (730 + 487) * (515.3 - 515.3) + (487 + 487) * (515.3 - \\ & 589.4) + (487 + 481) * (589.4 - 583.4) + (481 + 481) * (583.4 - 577.3) + (481 + 429) * (577.3 - \\ & 577.3) + (429 + 429) * (577.3 - 583.4) + (429 + 435) * (583.4 - 589.4) + (435 + 435) * (589.4 - \\ & 668.9) + (435 + 382.2) * (668.9 - 668.9) + (382.2 + 382.2) * (668.9 - 589.4) + (382.2 + 388.2) * \\ & (589.4 - 583.4) + (388.2 + 388.2) * (583.4 - 577.3) + (388.2 + 310.6) * (577.3 - 577.3) + (310.6 + \\ & 310.6) * (577.3 - 583.4) + (310.6 + 316.6) * (583.4 - 589.4) + (316.6 + 316.6) * (589.4 - 668.9) + \\ & (316.6 + 265.6) * (668.9 - 668.9) + (265.6 + 265.6) * (668.9 - 589.4) + (265.6 + 271.6) * (589.4 - \\ & 583.4) + (271.6 + 271.6) * (583.4 - 577.3) + (271.6 + 220.1) * (577.3 - 577.3) + (220.1 + 220.1) * \\ & (577.3 - 583.4) + (220.1 + 214.1) * (583.4 - 589.4) + (214.1 + 214.1) * (589.4 - 294.2) + (214.1 + \end{aligned} $

6212 Ambleside Drive, Myrtle Grove, Wilmington, New Hanover County, North Carolina, United States, 28409

Gross Living Area: 2312 sq. ft

Space	Area (sq. ft)	Calculation <small>Coordinate Polygon Area Algorithm using inches</small>
ATTIC (Non-living area)	66	$322.7 * (294.2 - 294.2) + (322.7 + 322.7) * (294.2 - 273.7) + (322.7 + 320.7) * (273.7 - 267.7) + (320.7 + 320.7) * (267.7 - 207.7) + (320.7 + 486.6) * (207.7 - 207.7)) * 0.5 * 0.00694$
LOW CEILING (Non-living area)	4	$-((730 + 730) * (294 - 304.8) + (730 + 614.4) * (304.8 - 304.8) + (614.4 + 614.4) * (304.8 - 357.4) + (614.4 + 484.6) * (357.4 - 357.4) + (484.6 + 484.6) * (357.4 - 294) + (484.6 + 730) * (294 - 294)) * 0.5 * 0.00694$
LOW CEILING (Non-living area)	4	$-((481 + 481) * (577.3 - 583.4) + (481 + 487) * (583.4 - 589.4) + (487 + 435) * (589.4 - 589.4) + (435 + 429) * (589.4 - 583.4) + (429 + 429) * (583.4 - 577.3) + (429 + 481) * (577.3 - 577.3)) * 0.5 * 0.00694$
LOW CEILING (Non-living area)	6	$-((388.2 + 388.2) * (577.3 - 583.4) + (388.2 + 382.2) * (583.4 - 589.4) + (382.2 + 316.6) * (589.4 - 589.4) + (316.6 + 310.6) * (589.4 - 583.4) + (310.6 + 310.6) * (583.4 - 577.3) + (310.6 + 388.2) * (577.3 - 577.3)) * 0.5 * 0.00694$
LOW CEILING (Non-living area)	4	$-((271.6 + 271.6) * (577.3 - 583.4) + (271.6 + 265.6) * (583.4 - 589.4) + (265.6 + 214.1) * (589.4 - 589.4) + (214.1 + 220.1) * (589.4 - 583.4) + (220.1 + 220.1) * (583.4 - 577.3) + (220.1 + 271.6) * (577.3 - 577.3)) * 0.5 * 0.00694$
LOW CEILING (Non-living area)	20	$-((320.7 + 322.7) * (267.7 - 273.7) + (322.7 + 322.7) * (273.7 - 294.2) + (322.7 + 214.1) * (294.2 - 294.2) + (214.1 + 214.1) * (294.2 - 267.7) + (214.1 + 320.7) * (267.7 - 267.7)) * 0.5 * 0.00694$
LOW CEILING (Non-living area)	124	$-((730 + 730) * (221 - 294) + (730 + 484.6) * (294 - 294) + (484.6 + 484.6) * (294 - 227) + (484.6 + 486.6) * (227 - 221) + (486.6 + 730) * (221 - 221)) * 0.5 * 0.00694$